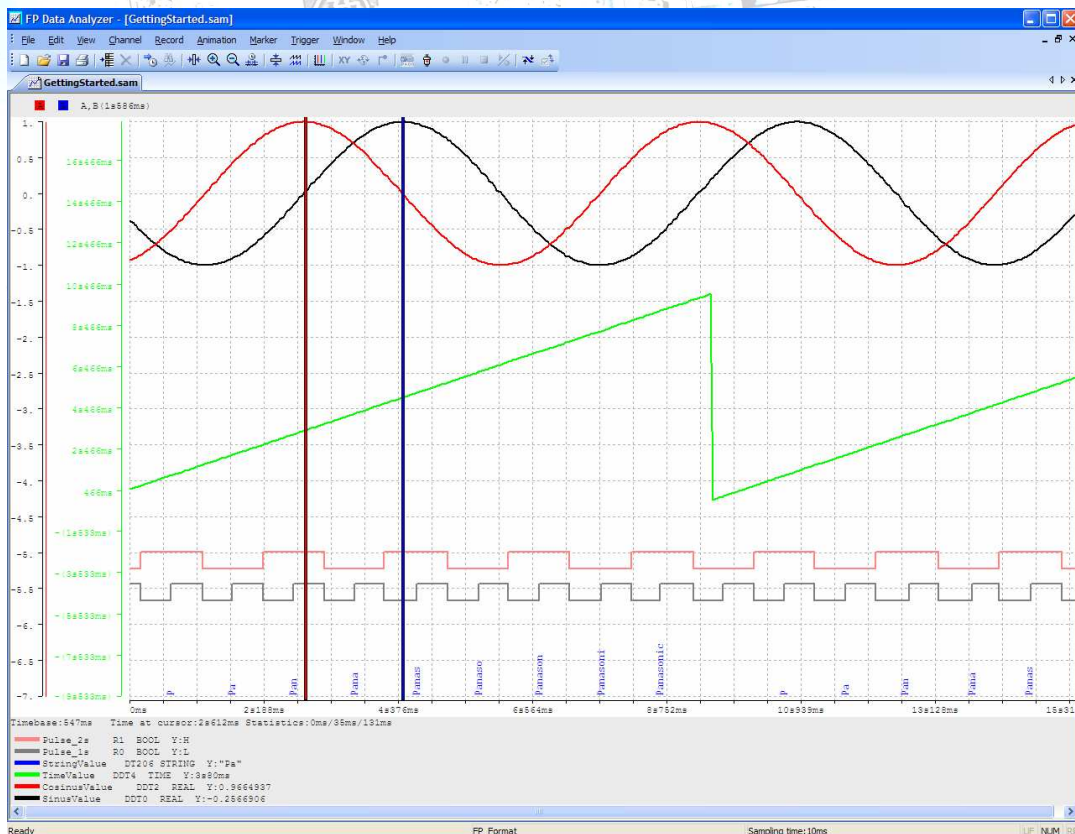


# FP Data Analyzer

The FP Data Analyzer is a software tool for acquisition, logic analysis and representation of recorded data on multiple channels connected to any Panasonic PLC. FP Data Analyzer uses the Panasonic MEWNET Manager. The software is an enhancement of FPWIN Pro's existing timeline charts but is a stand-alone tool. You need not install any other software to run the FP Data Analyzer, and the user interface will initially be available in German and English!

The basic function of the FP Data Analyzer is to read and display PLC data. Such data can be stored in a file and analysed in offline mode.



The FP Data Analyzer can be connected to any Panasonic PLC by utilizing the integrated MEWNET Manager, for instance via any COM port. Recording and analyzing remote PLCs, sensors, actuators, etc. via LAN or modem is just a matter of seconds. Just open the MEWNET Manager communication setup dialog, select Ethernet or modem and enter your parameters.

In addition, not only PLCs can be analyzed with the FP Data Analyzer! Via the integrated OLE interface, the P400 image processing software can also send samples to the analyzer.

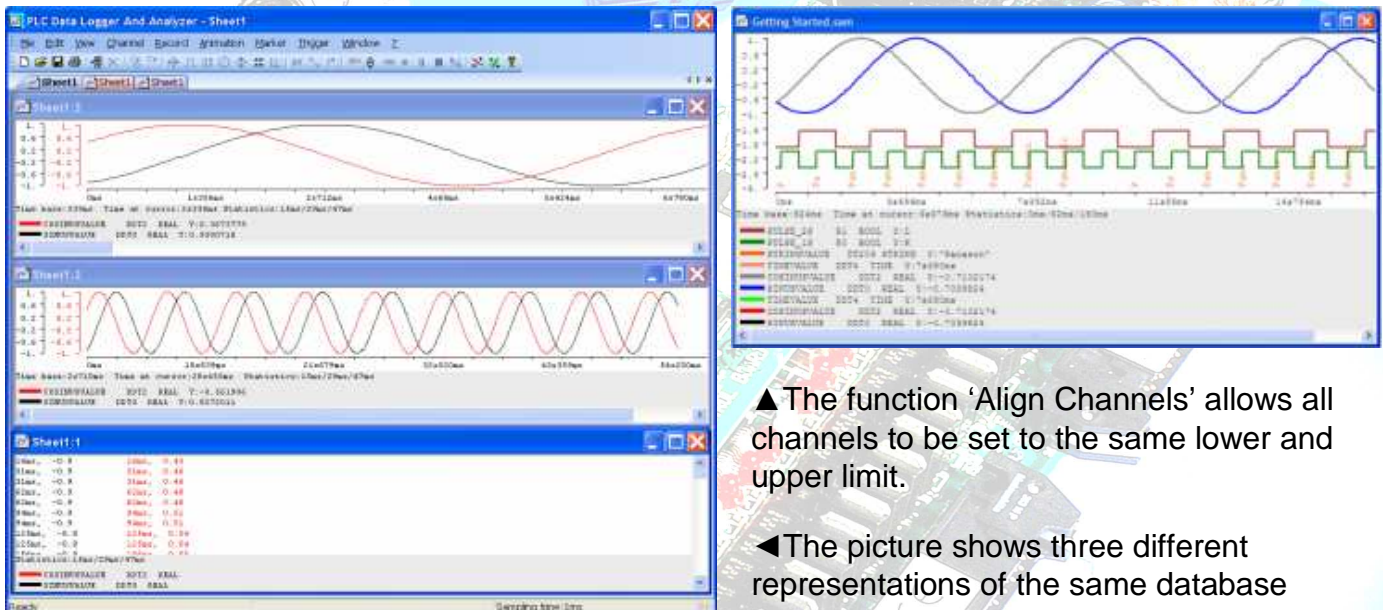
## The tool can be used for:

- PLC program debugging and analysis
- PLC program and parameter optimization, e.g. PID controller tuning
- Short- and long-term recording
- Finding and localizing sporadic errors that are hard to find
- P400 QA
- Documentation

The FP Data Analyzer makes it possible to monitor and analyze signal waveform in real time. Long-term recording with auto-saving is available. You can define comprehensive trigger conditions to determine one or more particular events that start or stop recording, e.g. to facilitate identifying sporadic, faulty conditions that are hard to trace. With the pre- and post-trigger function, samples can be stored before and after the trigger condition. Cycle precise monitoring is possible with the array upload feature and a small user program located on the PLC.

### Key Features:

- Integrated Panasonic MEWNET Manager
- LAN and modem connection for remote control via LAN, Internet or telephone line
- Concurrent data acquisition from several independent PLCs
- Acquisition of all internal and external PLC registers, relays, counters, timers, arrays and even DUTs
- Connection to P400 image processing software
- Data types can be recorded and displayed as: BOOL, INT, DINT, WORD, DWORD, REAL, STRING, ARRAY of type
- Adding new channels while recording
- Variable list is compatible to FPWIN Pro GVL export
- Trigger condition may consist of one or more channels linked with Boolean operators
- Trigger functions with pre-trigger, post-trigger
- User-defined sampling rate from a few milliseconds to hours or even days
- Auto-save to disk
- Each channel can be displayed in any color and trace width
- Display signals graphically as single channels, in XY-mode or in tables
- Time measuring function with up to 4 markers plus 2 trigger markers
- Jump to time
- Jump to an analog value
- Virtually unlimited number of samples
- Printing



### Ordering Information:

Item: FP Data Analyzer  
 Order-No.: AFPS04510

**Panasonic Electric Works Europe AG**  
 Rudolf-Diesel-Ring 2, 83607 Holzkirchen, Germany  
 Tel.: +49 (0) 8024-648-0 • Fax.: +49 (0) 8024-648-111  
 Internet: [www.panasonic-electric-works.com](http://www.panasonic-electric-works.com)